

CULTIVAR PROFILE

Noiret (NWAHR-ay)

BY C. Oliver, and H. Caspari, 2/2025

DRAFT

Steuben X NY65.0467.08
Interspecific Cross *Interspecific Cross*

Commercially released 2006 by Cornell-Geneva Grapevine Breeding program, NY, USA

Descriptor

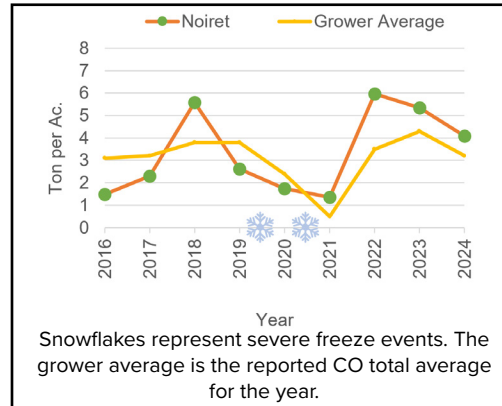
Noiret was released at a similar time as Marquette, but it hasn't experienced the same level of industry wide interest. While Noiret is not as cold hardy as Marquette, the fruit is less foxy and more favorable for winemaking. Leaves have 3 lobes and mild sawtoothing and clusters are generally large and loose with a dark blue color.

Growing Practices

This variety produces moderate to large vines with a semi-upright to semi-trailing growth habit which makes them adaptable multiple trellising systems including high-wire and vertical shoot positioning¹. Grafting to a resistant rootstock is not necessary but can prolong productivity of vines. Overall, Noiret is very disease resistant, but it does have a moderate susceptibility to powdery mildew. Since cluster shatter is uncommon, this variety is especially compatible for mechanical harvesting.

Concerns

Noiret does have moderate susceptibility



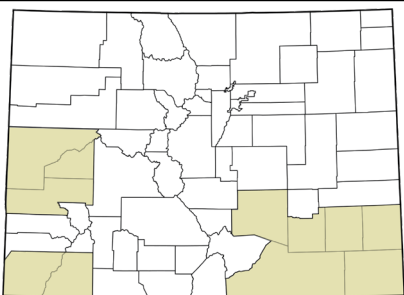
ty to powdery mildew and can require a spray program. Several chemical sensitivities have been observed such as mild sulfur phytotoxicity that is exacerbated by heat, severe Pristine phytotoxicity – which is noted on the fungicide label, and severe sensitivity to 2,4-D and dicamba². Long hang times should be avoided with this variety since it can increase the labrusca flavor.

Colorado Research

Noiret has been tested in four different CSU test plots since 2004; the Orchard Mesa station, the Rogers Mesa station and two off-site, grower/collaborator locations, one in Clifton and one in Ft. Collins. The vines have weathered multiple severe frost events in Mesa and Delta counties with near 100 % survival and numerous extreme frost events in Ft. Collins with 80% vines surviving.

References

- 1 Riesch, B., et al. 2006. NYFLS Bulletin No. 106.
- 2 Dami, I. 2023. Ohio State University Extension ANR-0138.



Counties suitable for production



Photo credit: Charlotte Oliver

Grand Valley Growth Profile

- Medium budbreak
- Mid-season ripening
- Sep 17 harvest
- 4.1 ton/ac average yield
- Medium-large cluster size

Cold Hardiness

- -15 to -22 °F
- Moderate trunk hardiness

Flavors

- Black pepper, raspberry
- Vegetative, green pepper

Juice Metrics

- 22.8 Brix
- 6.2 g/l titratable acidity
- 3.5 pH



Photo credit: Laura Homich

Colorado State University Extension is an equal opportunity provider. Colorado State University does not discriminate on the basis of disability and is committed to providing reasonable accommodations. CSU's Office of Engagement and Extension ensures meaningful access and equal opportunities to participate to individuals whose first language is not English. | Colorado State University Extension es un proveedor que ofrece igualdad de oportunidades. Colorado State University no discrimina por motivos de discapacidad y se compromete a proporcionar adaptaciones razonables. Office of Engagement and Extension de CSU garantiza acceso significativo e igualdad de oportunidades para participar a las personas quienes su primer idioma no es el inglés.
<https://col.st/OWMJA>.

© Colorado State University Extension, 12/2024.

learn.colostate.edu